



PRACTICAL FILMMAKING



Virtual Production

FABRICATED ELEMENTS





PRACTICAL FILMMAKING

Who's Using Fabricators?

VIRTUAL PRODUCTIONS WORLDWIDE

Including commercials, VP tech, testing.

FILM, TV, AND STREAMING

The most recognizable are ILM's Stagecraft with the hit series *The Mandalorian*



PHOTO: UNREAL ENGINE TEST



PHOTO: UNREAL ENGINE TEST



PHOTO OF MANDALORIAN MINIATURE



PRACTICAL FILMMAKING

“Old-fashioned techniques appear to have made a comeback, but the reality is, they never went away.”

Services We Offer

Set-enhancing elements

Add more unique interaction to your set



Miniatures for photogrammetry

Assisting in one-of-a-kind asset creation





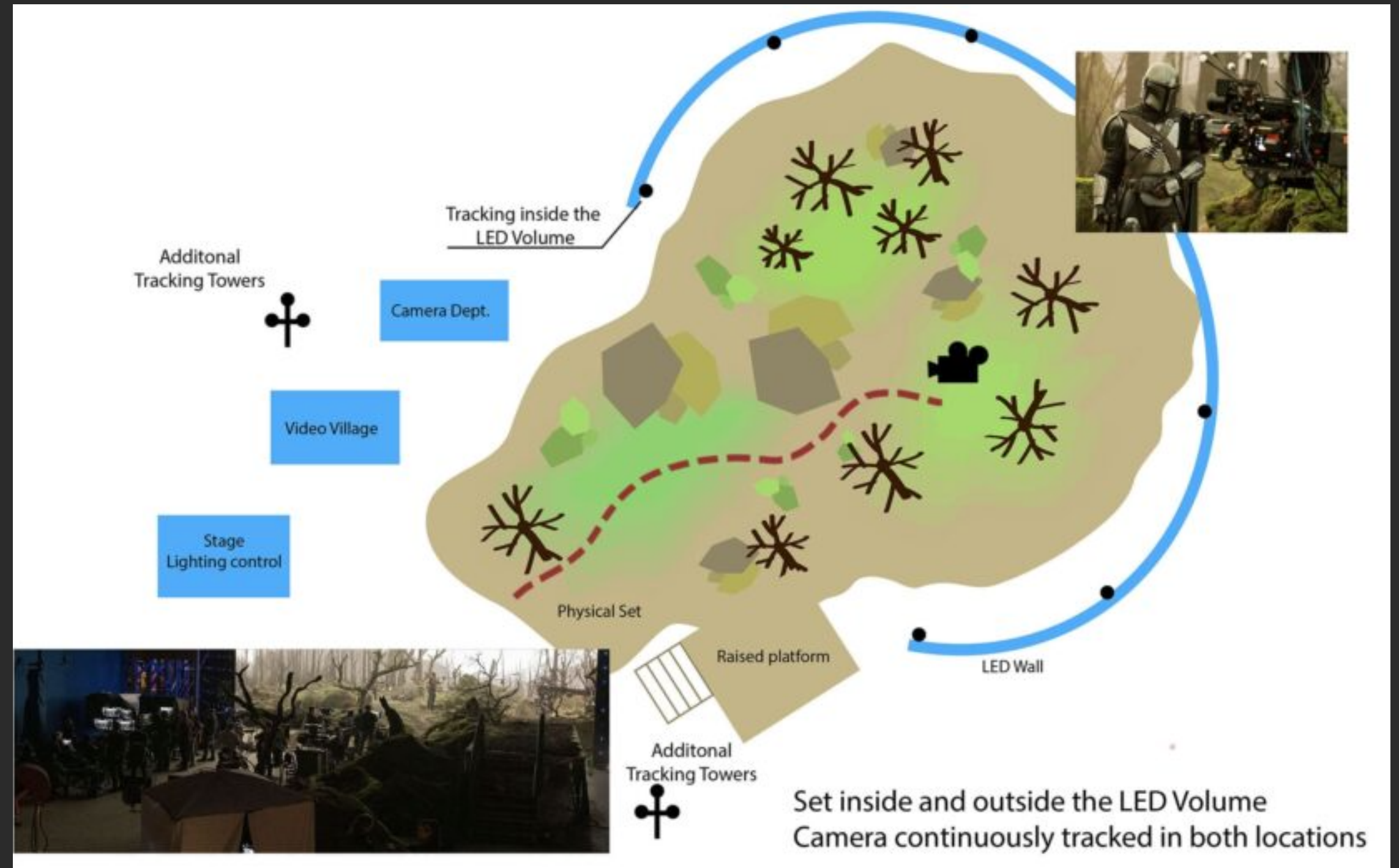
PRACTICAL FILMMAKING



FILM, TV, AND STREAMING

Stagecraft at ILM with the hit series *The Mandalorian*

Who's Using Fabricators?





PRACTICAL FILMMAKING

FILM, TV, AND STREAMING

Stagecraft at ILM with the hit series *The Mandalorian*

Who's Using Fabricators?



PHOTO ILM STAGECRAFT





More than What's on the Screen

Set-Enhancing Elements

Unique and custom-made foreground
set-enhancing fabrication

Why have a flat and simple
foreground?

Let your imagination run wild.

Allow your actors to interact with
physical pieces.



Types of Fabricated Foreground Elements

01

Ground surfaces

Uneven ground to replicate rock, sand, snowdrifts, berms. Made of lightweight EPS and hard-coated. Why go flat?

02

Ground elements

Such as boulders, protruding rocks, trees, stumps, cliff edges

03

Architectural

Temple ruins, building architecture, brick or stone walls, columns, massive gears

04

Sci-fi & vehicles

Spaceship parts, unique wall and window shapes, plane parts, tank parts, and more



EPS Fabrication

The advantage of these lightweight parts is that they're easy to move around set.





EPS Fabrication

This element can be custom-made to replicate anything on the screen. Floor surfaces like rock, ice or foreground statues.





PRACTICAL FILMMAKING



EPS Fabrication

Add hard coat for durability or to create plaster-brick flooring.





PRACTICAL FILMMAKING



EPS Fabrication

Texturize surfaces with a plaster coating.





PRACTICAL FILMMAKING



EPS Fabrication

Texturize surface rock wall can be used as a climbing wall or floor piece.



11

EXISTING ROCK WALLS



SAMPLE SOURCE:TIKTOK - CINE GEAR EXPO AT PARAMOUNT STUDIOS



PRACTICAL FILMMAKING



EPS Fabrication

Spray foam rock panels taken from actual rock molds to create walls and caves.





More than What's on the Screen

Photogrammetry Miniatures

Any world you can dream up, we'll assist with the production pipeline of your CGI with scannable, asset-friendly miniatures.

No concerns of location as models can be built and scanned, then imported to the platform of choice.

This is similar to an actual location scanned with a drone with the advantages of being smaller and fully customizable.



Types of Miniature Fabrication for Photogrammetry

A unique and efficient way to create assets for scanning.

This is an example of hybrid effects.

The sky is the limit!

01

Landscapes

Uneven ground to replicate rock, sand, snowdrifts, berms

02

World creation

Entire cave sets, ports, temple ruins

03

Architectural

Building architecture, bridges, and so much more

04

Sci-fi & vehicles

Spaceships, cars, tanks, ships



Hybrid Effects

Combining CG with Practical FX

“We’ve always used practical effects.”

Horton says that while digital effects are constantly evolving, they remain expensive and time-consuming to perfect, and that a combination of the old and new tricks will often yield the most impressive results.

Tom Horton, VFX producer



Hybrid Effects

Combining CG with Practical FX

The main reason why practical effects are suddenly hip again is also the grubbiest: “They’re a piece of the swag we call ‘fan service.’”

They have effectively become a way to lure audiences in by appealing to their sense of cinematic nostalgia.

Bryan Curtis, *The New Yorker*



Hybrid Effects

Combining CG with Practical FX

“It’s still about using the right tools and techniques to achieve the director’s vision, to create realistic, convincing effects in a cost-effective way, whether these techniques are traditional and in-camera [such as miniatures and practical effects], or digital.”

Leigh Took, Miniature FX Supervisor



Hybrid Effects

Combining CG with Practical FX

“Having the character walking with the camera and effectively moving through doorways and we could see all the correct light shifts, well, that was kind of our ‘Eureka’ moment,” says Bluff. This extended to building miniatures and building pano-spheres after photographing them. “And that for me was when I started having a conversation with Jon about forgetting the fact that this was using a game engine ... let’s even build a miniature knowing it’s going to be photo-real. Let’s do full photogrammetry on the miniature, and then put that into the game engine as well.”

Richard Bluff, VFX Supervisor, *The Mandalorian*



PRACTICAL FILMMAKING



Miniature Fabrication

Advantages: Cover vast areas quickly with a one-of-a-kind asset.



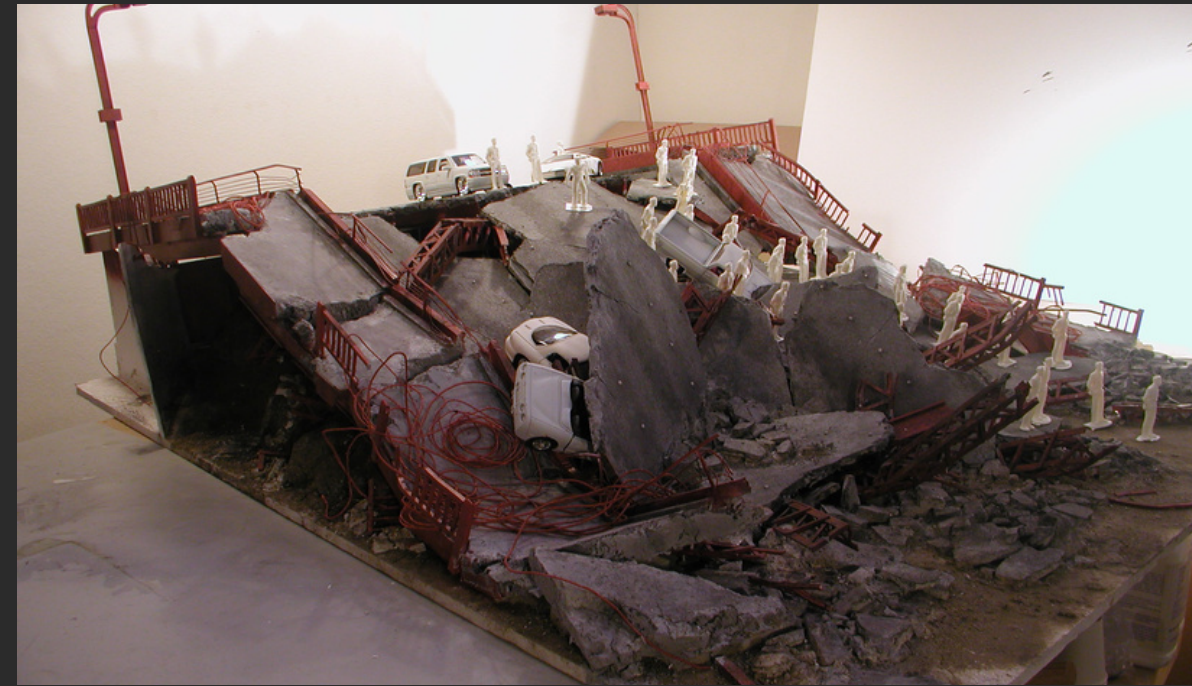


PRACTICAL FILMMAKING



Miniature Fabrication

Cover vast areas quickly with a one-of-a-kind asset.



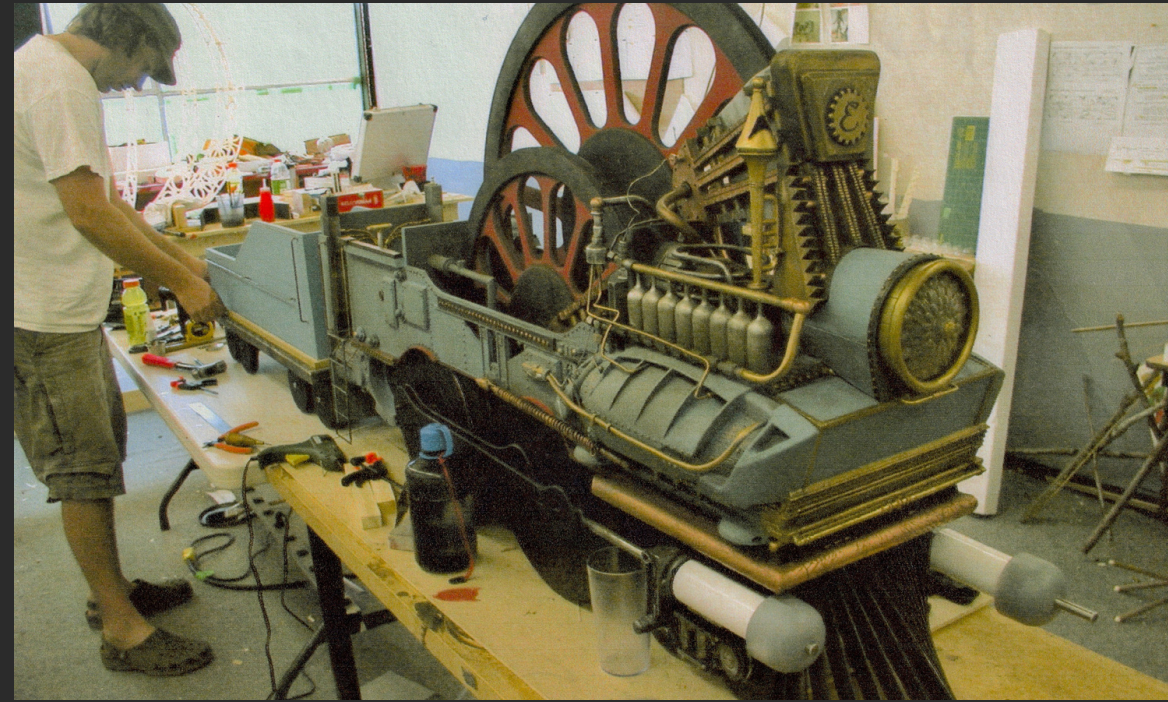


PRACTICAL FILMMAKING



Miniature Fabrication

Cover vast areas quickly with a one-of-a-kind asset.



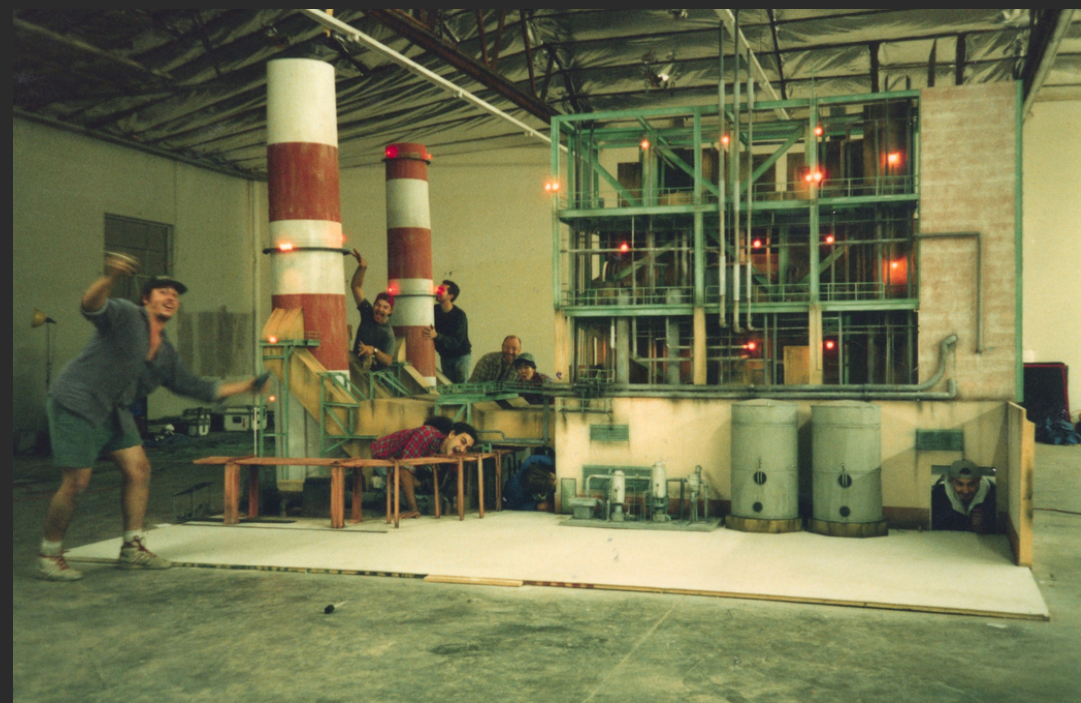


PRACTICAL FILMMAKING



Miniature Fabrication

Cover vast areas quickly with a one-of-a-kind asset.





PRACTICAL FILMMAKING



Miniature Fabrication

Consider that these big budget sets could, in fact, be fabricated in a detailed miniature and scanned for lower budgets creating a much more affordable and one-of-a-kind option.



PHOTO OF SNAKE EYES CAVE SET





Miniature Fabrication

Consider that these big budget sets could, in fact, be fabricated in a detailed miniature and scanned for lower budgets creating a much more affordable and one-of-a-kind option.



PHOTO OF LOST IN SPACE SEASON THREE



Gary G. Young

Owner/Operator

HISTORY

With over thirty-five years in the film industry in both LA and Vancouver, Gary has an extensive background in miniature visual effects, props, art department, and as a Head Set Sculptor.

MORE INFO

Find work gallery, IMDB and full filmography at

www.practicalfilmmaking.com.





PRACTICAL FILMMAKING



Located in Vancouver, BC

Contact us for more information or a quote:

practicalfilmmaking.com

